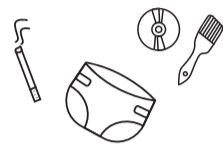


WET WASTE



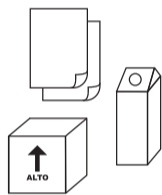
Food waste
Pet faeces (without litter)
Hair and body hair
Soil
Paper towels with food residue
Tea and coffee waste
Corks
Toothpicks
Flowers and little plants
Pizza box with food residue

MIXED WASTE



Chemical paper
CD/DVD/VHS and audiocassettes
Pyrex and crystal glass
Cotton swab and plastic flatware
Vacuum cleaner bags
Rubber materials and sweeping leavings
Brushes and toothbrushes
Rags and sponges
Paper tissues and blotting paper
Napkins and sanitary napkins
(to reserve the home withdrawal of napkins and sanitary napkins call the toll free number or go to the Waste Collection Center)

PAPER AND CARDBOARD



Pizza box (without food residue)
Egg carton
Cardboard boxes
Paper bags
Tetrapak without caps
Paper stack
Cardboard packaging
Newspaper and magazines
Books and notebooks

GLASS



Glasses
Glass bottles for food
Glass jars
Perfume bottles

PLASTIC AND METALS



Plastic bottles
Tanks and food containers
Plastic trays
Aluminium foil and cans
Food containers
Plastic and metal caps
Aluminium trays (without food residue)
Plastic dishes and cups (without food residue)
Plastic bags
Yogurt jars

FOR ALL THE OTHER WASTE CALL THE TOLL FREE NUMBER OR GO TO THE WASTE COLLECTION CENTER – VIA LAGO.

DOMESTIC USERS

Consult the table

Check the waste that must be thrown every day following the coloured boxes. Each colour in the table identifies the type of waste that will be collected.

MON	TUE	WED	THU	FRI	SAT
Green circle	Blue circle	Yellow circle	Brown circle	Grey circle	Brown circle
				Green circle	

Expose your waste bins from **7 pm to 11 pm** of the day before the collection.

Used clothes will be collected on the last Friday of each month. An additional collection is expected on the first Friday of April and November.

USEFUL INFORMATION

In Lago road (next to the tensile structure), you can find the Waste Collection Center, open in these days:

- **FROM OCTOBER TO MAY**
 - On Monday, Wednesday and Friday from 9 am to 1 pm
 - On Tuesday, Thursday and from 2 pm to 5 pm
 - On Saturday from 9 am to 12 am and from 2 pm to 5 pm
- **FROM JUNE TO SEPTEMBER**
 - On Monday, Wednesday and Friday from 9 am to 1 pm
 - On Tuesday, Thursday and from 3 pm to 6 pm
 - On Saturday from 10 am to 1 pm and from 3 pm to 6 pm

To the Waste Collection Point you can throw:

- paper and cardboard
- plastic and metal packaging
- glass
- wood
- used clothes
- pruning
- vegetable and mineral exhausted oil
- low batteries
- expired medicines
- spray cans with the symbol "T" or "F"
- spent cartridges and toners
- electrical and electronic equipments
- bulky waste

BULKY WASTE TO THROW AWAY?

CALL US!

To avoid the abandonment of bulky waste in the city and in the countries, there is a free service of home withdrawal for citizens.

The withdrawal, of maximum n. 3 pieces, is provided on the road stage.

To reserve this service, call the toll free number **800.999.531**



Abandoning bulky waste is strictly forbidden and involves the risk of penalties.

Furthermore, abandoning waste means pollute the environment and dangers for the community, with more costs and diseases for everyone's health.

For more info about AroBa2 consult the website **www.aroba2.it** or send an e-mail at **binetto@aroba2.it**

