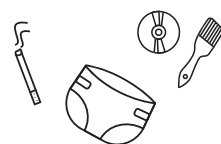


WET WASTE



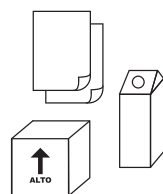
- Food waste
- Pet faeces (without litter)
- Hair and body hair
- Soil
- Paper towels with food residue
- Tea and coffee waste
- Corks
- Toothpicks
- Flowers and little plants
- Pizza box with food residue

MIXED WASTE



- Chemical paper
 - CD/DVD/VHS and audiocassettes
 - Pyrex and crystal glass
 - Cotton swab and plastic flatware
 - Vacuum cleaner bags
 - Rubber materials and sweeping leavings
 - Brushes and toothbrushes
 - Rags and sponges
 - Paper tissues and blotting paper
 - Napkins and sanitary napkins
- (to reserve the home withdrawal of napkins and sanitary napkins call the toll free number or go to the Waste Collection Center)

PAPER AND CARDBOARD



- Pizza box (without food residue)
- Egg carton
- Cardboard boxes
- Paper bags
- Tetrapak without caps
- Paper stack
- Cardboard packaging
- Newspaper and magazines
- Books and notebooks

GLASS



- Glasses
- Glass bottles for food
- Glass jars
- Perfume bottles

PLASTIC AND METALS



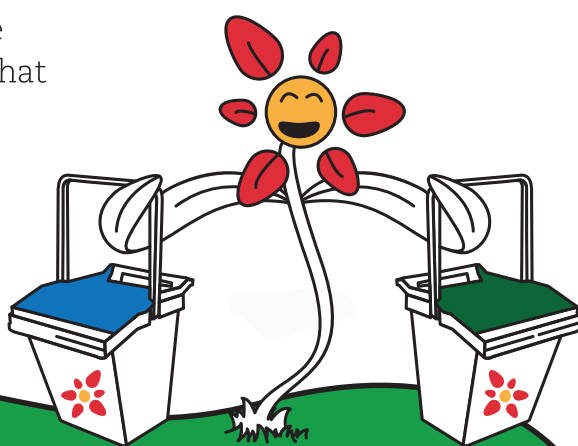
- Plastic bottles
- Tanks and food containers
- Plastic trays
- Aluminium foil and cans
- Food containers
- Plastic and metal caps
- Aluminium trays (without food residue)
- Plastic dishes and cups (without food residue)
- Plastic bags
- Yogurt jars

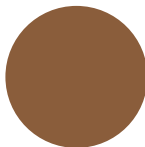
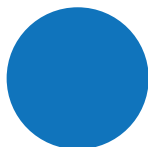
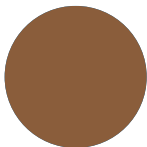
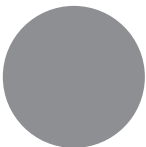



FOR ALL THE OTHER WASTE CONSULT THE ECOGUIDA.

DOMESTIC USERS

Consult the table

Check the waste that must be thrown every day following the coloured boxes. Each colour in the table identifies the type of waste that will be collected.



MON	TUE	WED	THU	FRI	SAT
				 	

Expose your waste bins from **7.00 pm to 11.00 pm** of the day before the collection.

Used clothes will be collected on the last Thursday of each month. An additional collection is expected on the first Thursday of April and November.

USEFUL INFORMATION

In Santa Teresa di Lisieux road (next to the Palatour), you can find the Waste Collection Center, open in these days:

- **FROM OCTOBER TO MAY**
 - Monday, Tuesday, Thursday, Friday, Saturday from 9 am to 12 pm and from 2 pm to 5 pm;
 - Sunday from 9 am to 12 pm;
- **FROM JUNE TO SEPTEMBER**
 - Monday, Tuesday, Thursday, Friday, Saturday from 9 am to 12 pm and from 3,30 pm to 6,30 pm;
 - Sunday from 9 am to 12 pm;

To the Waste Collection Point you can throw:

- paper and cardboard packaging;
- plastic and metal packaging;
- glass
- wood
- used clothing;
- pruning;
- vegetable and mineral exhausted oil;
- low batteries;
- expired medicines;
- spray cans with the symbol "T" or "F";
- light bulbs;
- spent cartridges and toners;
- electrical and electronic equipments
- bulky waste.

BULKY WASTE TO THROW AWAY?

CALL US!

To avoid the abandonment of bulky waste in the city and in the countries, there is a free service of home withdrawal for citizens.

The withdrawal, of maximum n. 3 pieces, is provided on the road stage.

To reserve this service, call the toll free number **800.999.531**



Abandoning bulky waste is strictly forbidden and involves the risk of penalties.

Furthermore, abandoning waste means pollute the environment and dangers for the community, with more costs and diseases for everyone's health.

For more info about AroBa2 consult the website **www.aroba2.it** or send an e-mail at **bitritto@aroba2.it**

